

32 1/2 South Main St.
Pittsford, NY 14534
www.bellableucolor.com
(585) 249-9738

Inside this issue. . .

Recommended Reading

Greetings

Artist Profile

Let's Discuss Accessories

Identify Your Face Shape

Recommended Reading

what not to wear

by Trinny Woodall and Susannah Constantine

What Not To Wear is a book of hands-on advice and straight-talking guidance that is all about personal style - dressing for your body shape and personality.

Trinny and Susannah will tell what to toss, what to buy, where to find it and how to wear it. Because looking good has nothing to do with fashion trend and everything to do with **what not to wear.**

Greetings,

It's mid summer and we hope you are finding time to enjoy family, friends, a good book and the sunshine! It seems that everywhere you turn this time of year there are lovely rich colors.....in the gardens, in the food we eat, and in all the clothing shops! This is truly the most colorful time of year in the northeast and a great time to experiment with wearing new colors.

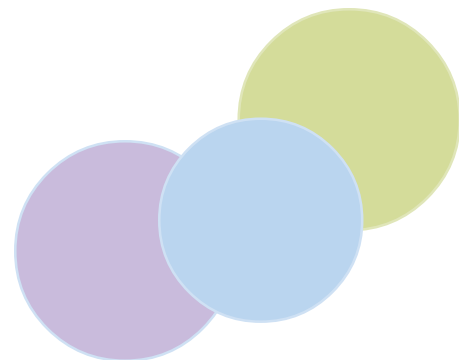
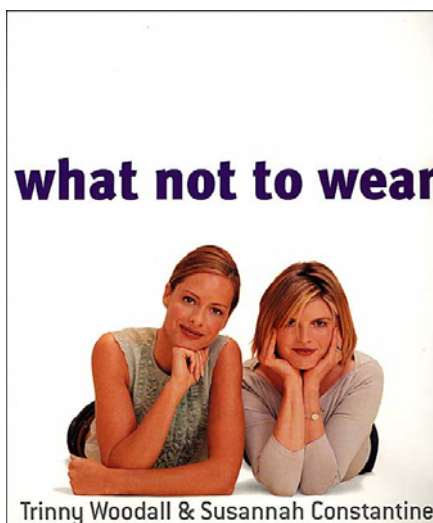
Here's what's going on with us. Bella Bleu has been in business for 2 1/2 years . . .WOW! We decided it was time to make some changes and improvements to our website. Look for those later this Summer.

We've also been busy researching cosmetics. . . ingredients and color and hope to be able to launch our new cosmetic line later this year. Of course you will be the first to hear about it.

All of you have been an inspiration to us and we have so enjoyed working with you. If you'd like to share a story or a picture of you in your beautiful shades of color we would love to put in an upcoming edition of this newsletter. Don't be shy, celebrate your colors!! Email comments or ideas or suggestions for upcoming editions to info@bellableucolor.com

Colorfully Yours,

Julie and Kerry



Artist Profile -Melissa Lebeau



Melissa has had a passion for jewelry for as long as she can remember. After leaving her job and becoming a stay at home mom in 2001, she began working with beads. First it was just a hobby, then over time has been involved in home parties, classes and local arts festivals. Now, Melissa focuses her time on making handmade sterling silver pieces and lampwork glass beads. Melissa currently lives in Webster with her husband and two daughters. Her next upcoming venue will be the Clothesline Arts Festival where Melissa has sold her jewelry for the past five years. The festival is September 8-9 at the Memorial Art Gallery. Look for Melissa under her booth name "Cafe Bijou." Or you can check out her website at www.mcl-designs.com.

LET'S TALK ACCESSORIES



Accessories are intended to add to the attractiveness of a person. They are not meant to take away from the person. We consider jewelry, hair decorations, nail polish, belts, shoes, and scarves all to be an accessory. In your personal book of color there is a strip that indicates whether you should stick to gold for warm seasons or silver for cool seasons or both for neutral palettes.

Remember we wear make-up, clothing, and accessories to attract. We all have a desire to be appealing to those around us.

First determine your face shape. By following the simple steps outlined below:

1. Pull hair back and secure with pins or a headband so hair is completely off the face.
2. Stand 12" from a mirror and look straight into it — or have someone take a picture of you facing straight into the camera with your hairline showing.
3. Outline your face with a marker on the mirror with tracing paper, or on the photo.

Once you determine your face shape (using the chart on the next page) you can, pick jewelry to compliment your unique face. By using the correct neckline in clothes and jewelry, the shape of your face will appear to change. Necklines should create a balanced look around the face. Necklines and accessories that are the same shape as your face should be avoided.

Dangling earrings will make your face look longer, as well as V-shaped necklines or jewelry. Studded earrings will make the face look rounder, as well as rounded/choker style necklaces.

As a rule of thumb:

Round Neck - V-neckline (vertical lines)

Long Face - bateau necklines (Horizontal lines, boat neck)

Oval Face-scoop necklines

Heart Shaped Face - crew necklines

Square Face -V-neckline or Round neckline

FIND THE RIGHT HAIRSTYLE FOR YOUR FACE SHAPE



OVAL FACE

Oval is considered by many to be the ideal and most versatile face shape, since nearly every hair style looks becoming on this facial shape. Hair pulled back or worn in an updo shows off the oval face the most. In long styles, a great classic look is a center or side part with hair touching shoulders. The short-layered looks with curls and a close extended nape focus on the oval.



ROUND FACE

This shape is round at the cheeks and has a circular form. There is more of the face near the ears and gradually less curving upward and downward.

The goal: to slim your face. Hair below the chin line should be worn with a face-lengthening center part; for hair above chin line, wear an off-center part to interrupt the roundness. Height at the crown and a bare forehead lengthen and slim the face.

It's best to avoid short and sleeked-back hairstyles. In short-angled styles, you are best seen with hair brushed away from the face, building extra crown height to narrow the roundness of your features.

Though bangs shorten the face, you can wear curly, tousled bangs or a soft wispy fringe. Always avoid full, straight-falling bangs. Wear longer styles closer to the face to give length.



SQUARE FACE

This face is characterized by an angular jaw and square brow, with jaw and brow being nearly the same width. The goal: soften the sharp angle of jawline and minimize squared-off brow.

Hairstyles which emphasize the cheekbones mid-line of the face are most flattering. Bangs and waves at the temple also soften the square. Wear your best styles with hair swinging forward onto the face to reduce the angles. Hair length is best about 1-1/2" below the chin, or extending to shoulder length to reduce and soften the squareness of your jaw.

Hair worn on the forehead is always perfect for you, as long as it is wispy or fringed. Never wear straight bangs. Hair turned under at the bottom also will narrow the width of the jaw. Styles in loose curls and waves add extra dimension to the square face.



PEAR SHAPED FACE

This shape has a wide chin and a narrow forehead. The goal: narrow the chin and widen the forehead. Wear your hair wide and full at the top of the head and temples, brushed away from the face and up toward the ear to widen forehead; from the ear, angle hair forward toward the chin to soften and narrow a strong jaw.

Styles which are wide and full at the chin will emphasize the width of the jawline, and should be avoided. The wedge styles, which are brushed away from the face and give width at the forehead are perfect for this facial shape.

HEART SHAPED FACE



This is a triangular-shaped face. This face is narrow at the jaw line, wider at the eye line, cheek bones and even more at the brow line. The goal: diminish forehead width and create a wider, fuller jaw effect. Soft bangs flatter this shape, whether curly or smoother. Or wear a side part with soft three-quarter bangs swept over one side to balance your forehead width.

The styles should be fuller at the jaw line. Upswept at the sides and off the forehead further emphasize your feminine appeal. A medium length to mid-neck is your best look. Fullness at the bottom, with hair directed forward onto the cheeks gives you the appearance of a wide chin. The soft layered bob styles are ideal. Or if you prefer, curls or loose waves, shaped from the ears down, add width and fullness to your chin.



OBLONG FACE

This shape is long and thin, often with a chin that tends to look pointed. There is very little difference in width between the top, middle or bottom of your face but it is more rounded than the square face. Hairstyles should add width and fullness to the sides of the face and around the eyes, cheekbones and ears.

This shape benefits from a low side part, with a sweep of hair brushed across the forehead and secured with a comb.

Straight-falling bangs or bangs blended with the sides of your hair, shorten the overall face length. Your best hair length reaches to the middle of the neck. Favor volume with curly or wavy styles that are very becoming, giving you the illusion of balanced width. Wide curly bob styles are ideal for this shape.

